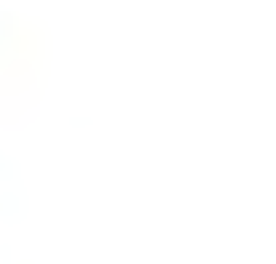
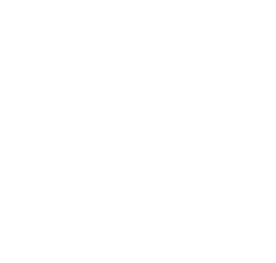
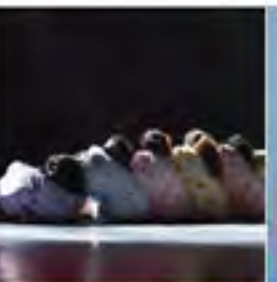




# Mapping Connections

Draw Closer through Art Online Project



## Group 1

Na Renhua 娜仁花 [88186731@qq.com](mailto:88186731@qq.com)

Huang Jiaying 黄嘉兴 [1483683213@qq.com](mailto:1483683213@qq.com)

Zheng Rongjun 郑荣军 [540669149@qq.com](mailto:540669149@qq.com)

Zhang Rui 张睿 [376853599@qq.com](mailto:376853599@qq.com)

Zhou Xiao 周潇 [270019697@qq.com](mailto:270019697@qq.com)

# INSEEA

THE INTERNATIONAL SOCIETY  
FOR EDUCATION THROUGH ART



Mapping 是一个个合心意的计划，是一长串的记忆。不必担心是否相识相知，将涓涓溪流纺成悠悠的歌。

Mapping is a consensual plan, a long list of memories. Don't worry about knowing each other or not; spin the trickling stream into a long, melodious song.

Group 2

Na Renhua 娜仁花 [88186731@qq.com](mailto:88186731@qq.com)

Li Hui 李辉 [2199901703@qq.com](mailto:2199901703@qq.com)

Wu Yinglu 吴颖露 [66566183@qq.com](mailto:66566183@qq.com)

Ma Haomei 麻豪媚 [279565802@qq.com](mailto:279565802@qq.com)

Kang Keke 康可可 [340278942@qq.com](mailto:340278942@qq.com)

**INSEEA**

THE INTERNATIONAL SOCIETY  
FOR EDUCATION THROUGH ART



**Mapping 是是能拉近彼此心灵的信件，是时光的链接，人类同频共振，向着同一个方向输出的力量。**

**Mapping is a letter that can bring each other's hearts closer, a link to time, a human resonance at the same frequency, and a force output in the same direction.**

### Group 3

Na Renhua 娜仁花 [88186731@qq.com](mailto:88186731@qq.com)

Xu Feng 徐枫 [710289206@qq.com](mailto:710289206@qq.com)

Yang Yuehan 杨越含 [465098566@qq.com](mailto:465098566@qq.com)

Chen Yanmin 陈艳敏 [454440249@qq.com](mailto:454440249@qq.com)

Zhang Rui 张睿 [376853599@qq.com](mailto:376853599@qq.com)

# INSEA

THE INTERNATIONAL SOCIETY  
FOR EDUCATION THROUGH ART



Mapping 是一长串的红点，由一个个期待编织而成。向往的影子，反射的语言。离家，回家，同一扇门，打开时是不同的心情。

Mapping is a long string of red dots, woven from one expectation after another. The shadow of longing, the language of reflection. Leaving home, going home, the same door, a different mood when opened.

## Group 4

Yvette Walker, [ylwalker@student.unimelb.edu.au](mailto:ylwalker@student.unimelb.edu.au)

NEDASADAT SAJADI, [nsajadi@student.unimelb.edu.au](mailto:nsajadi@student.unimelb.edu.au)

Ana Ward-Davies, [ana.warddavies@unimelb.edu.au](mailto:ana.warddavies@unimelb.edu.au)

Sarah Healy [sarah.healy@unimelb.edu.au](mailto:sarah.healy@unimelb.edu.au)

Kathryn Coleman [kathryn.coleman@unimelb.edu.au](mailto:kathryn.coleman@unimelb.edu.au)

# INSEEA

THE INTERNATIONAL SOCIETY  
FOR EDUCATION THROUGH ART



## Group 5

Gong Yu 杨国琼 [ygg@zhipu.org](mailto:ygg@zhipu.org)

Yang Guogiong 罗龙吉 [419579727@qq.com](mailto:419579727@qq.com)

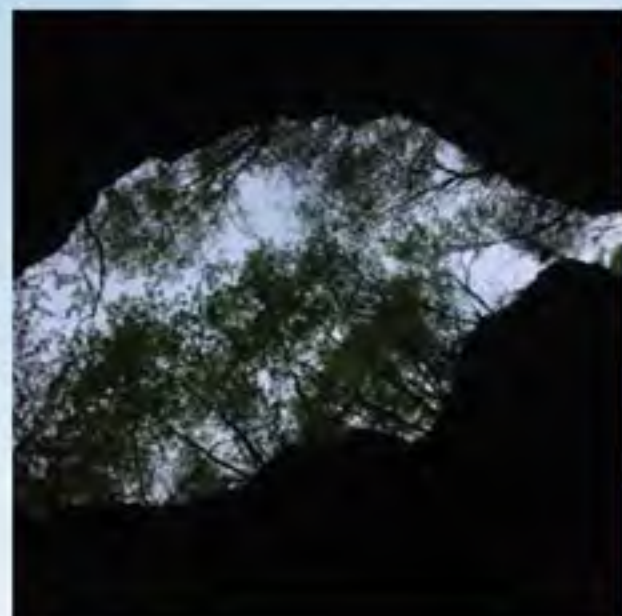
Luo Longii 谭浙 [tz\\_heartsmove@163.com](mailto:tz_heartsmove@163.com)

Tan Zhe 唐潇雯 [tmm\\_heartsmove@163.com](mailto:tmm_heartsmove@163.com)

Tang Xiaowen 唐潇雯 [tmm\\_heartsmove@163.com](mailto:tmm_heartsmove@163.com)

# INSEEA

THE INTERNATIONAL SOCIETY  
FOR EDUCATION THROUGH ART



Mapping 有限又无限。天定还是人为？困境与希望，你看我，我看你。无解。

Mapping is both finite and infinite. Providence or man-made? Dilemma and hope, you look at me, I look at you. No solution.

## Group 6

Ding Zhipeng 丁志鹏: 290772446@qq.com

Zhang Jing 章静: 642002048@qq.com

Xiao Chunyu 肖春玉: 16638264@qq.com

Soybean sprouts 黄豆芽: 423218130@qq.com

Lu Xiongiong 陆熊熊: 18215621567

# INSEEA

THE INTERNATIONAL SOCIETY  
FOR EDUCATION THROUGH ART



妈妈的裙子，花的海洋里，做个小孩；世界在脚下，未来在远方；扬帆起航，Be kind.

On mother's skirt, the ocean of flowers, to be a child; The world is at your feet, the future is in the distance; Set sail, Be kind.



## Group 7

Soybean sprouts 黄豆芽 [423218130@qq.com](mailto:423218130@qq.com)

Pang.zi [1369490477@qq.com](mailto:1369490477@qq.com)

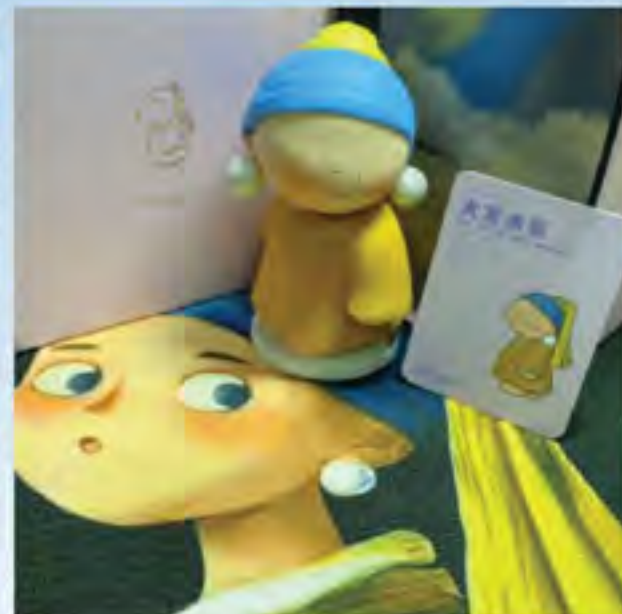
Xu Xiunan 徐秀楠 [296340918@qq.com](mailto:296340918@qq.com)

Lv Kai 吕凯 [caa1928@qq.com](mailto:caa1928@qq.com)

Ma Ke 马科 [1463899729@qq.com](mailto:1463899729@qq.com)

# INSEEA

THE INTERNATIONAL SOCIETY  
FOR EDUCATION THROUGH ART



**Mapping** 万般美好，如鱼一样自由，像妈妈的围裙一样温暖。去湖边吹风很开心。

Mapping is so beautiful, as free as a fish, as warm as a mother's apron. It was a pleasure to go to the lake to feel the breeze.



Please share with us if you have more!